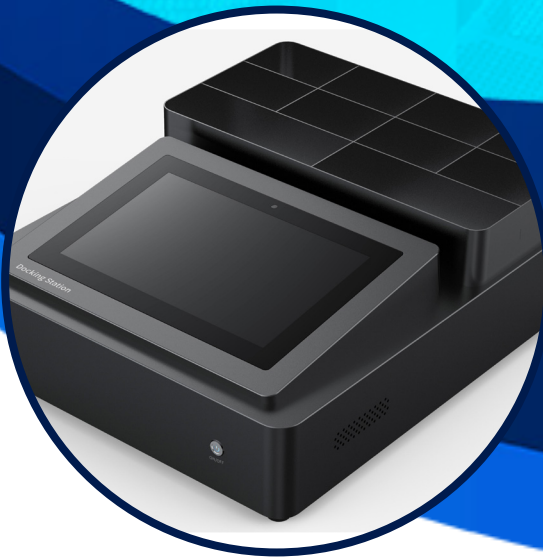


20

Years
of experience

PB-S3

10 ports Docking station



Features

- 8 inches 1024800 LCD HD capacitive touch screen
- Support 10 body cameras data uploading and recharging simultaneously
- Simple installation
- Operation and maintenance convenience
- Large capacity storage
- Industrial Grade Mainboard, working stable in 724hrs

Software

Application	
Data automatic collection	Docking station will automatically collect all the video, audio, pictures, logs and other data from 10 Body Worn Cameras once connected.
Automatic data clearing	All video and audio data of the body cameras will be automatically cleared once the uploading finished.
Breakpoint Transmission	Support
Automatic charging	Body Worn Camera will be automatically recharged once connected to the docking station
Time synchronization	Support automatic time correction of the accessed body worn camera, and the time could be accurate to "year, month, day, hour, minute and second";
Automatic data upload	Support access to Data Evidence Management System (DEMS) , which can automatically upload video and audio files to the server.
Device Management	
Status display	It will display body worn camera's ID, device storage space, loading status etc while data uploading
Fault alarm	It will alarm automatically when detecting fault for hard disk, or low memory etc
User management	Create/disable/delete user ID and authorization management for user
Log recording	System will record all operations of body worn camera and docking station
Privilege management	Only authorized user has permission to modify the system configuration and file search, video playback, data backup etc

Compatibilty	only for authorized body worn camera
Info management	support setting relevant info about the device, such as Device ID, user, IP address, contact info etc
Status management	Support
Administrator Management	Support

Hardware

Specification	
Size	45*38*10.1cm
Weight	7.0 Kg
Selection	Steel and galvanized sheet
IP Protection grade	IP20
Equipment stability	The law enforcement data acquisition equipment works continuously for 168h under normal working conditions, and every 24h is not less than 2h under full load data collection without electrical, mechanical or software failure.
Reliability	≥60000h
Alarm sound	Between 65dB-90dB for ≥5min
Working noise	≤50 dB

Screen	
Size	10 inches touch screen
Resolution	1280 * 800
Screen type	LCD screen
Touch screen	HD LCD integrated infrared 10 inch touch screen
Storage	
Disk slot	1 System Disk, 2 Data Disks
High-speed Solid-state Disk	SATA 64GB
HDD	SATA 2*HDD, Support 1-10TB of storage capacity
Storage	Standard 2TB
Raid	N/A
performance	
Main control board	Intel Industrial Grade, working stable in 7*24hrs
CPU	Quad-core / Quad-thread, 2.4GHz(4C/4T)
RAM	4GB (8GB for optional)
Ports	
USB port	10 ports USB2.0, industrial HUB, ensure data transmission stability and speedability
Output Current (Single port)	5V 1A
Data acquisition rate	≥8MB/s
Video output port	VGA/HDMI
Network port	RJ45

WIFI	Optional
Audio port	Support
Charging Time	It can automatically charge the 10 channel body worn camera at the same time, and the charging time is less than 4 hours
Power	
Voltage	110V-240V AC
Power input	Supports normal operation within the range of 85% ~ 110% of the device's power supply voltage rating
Power protection	OVP overvoltage protection, OCP overcurrent protection, OTP overtemperature protection, SCP short circuit protection and overload protection
Others	
Operation System	Windows7, Windows10, Linux system for optional
Working temperature	-10°C-55°C
Storage temperature	-25°C-60°C
Storage humidity	0%-93%
Working humidity	≤93%
Accessories	Charge cable, Adapter, Manual, CD



PRISMABYTES

Unit 17-03 & 17-04, Tower 1, Faber Towers,
 Jalan Desa Bahagia, Taman Desa, 58100 Kuala Lumpur
 Direct Phone: +60379846781 ; Mobile: +60122352710
 www.prismabytes.com Email: bd@prismabytes.com